

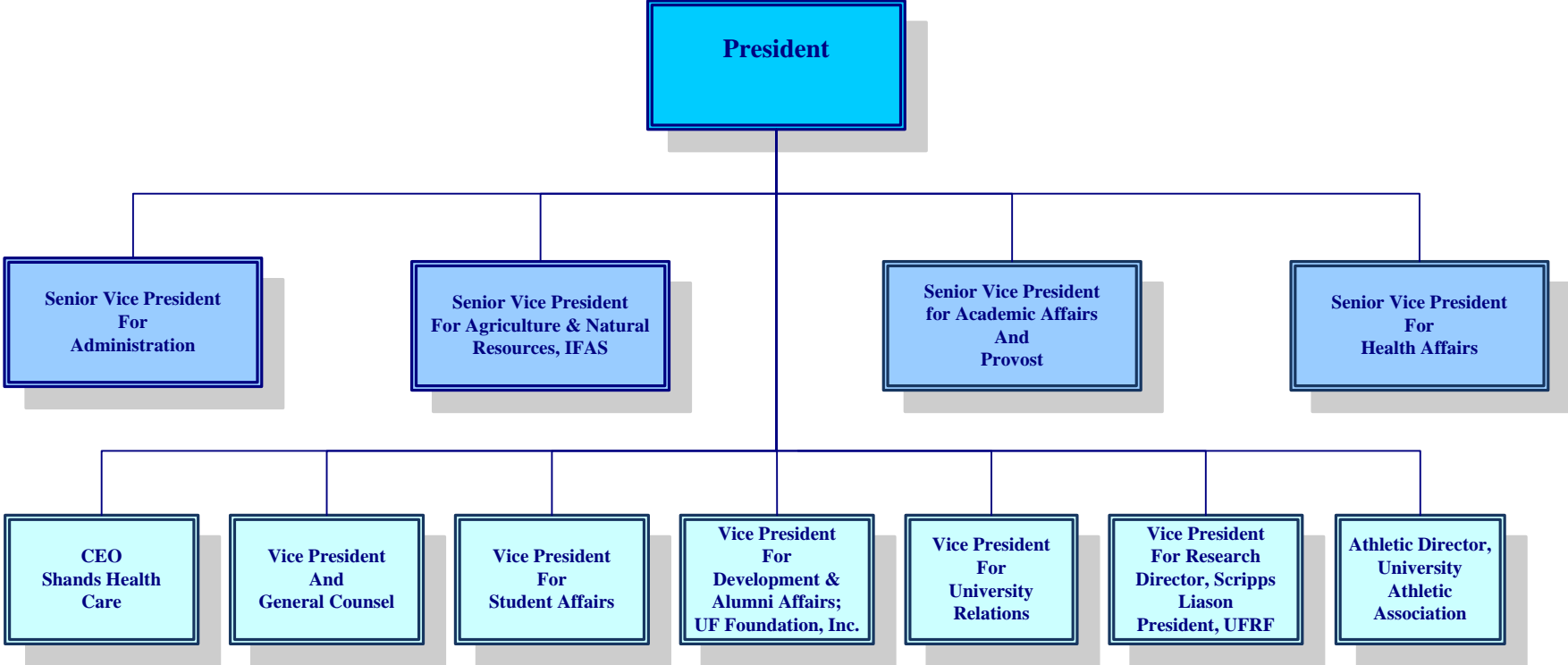


University of Florida Organization Chart

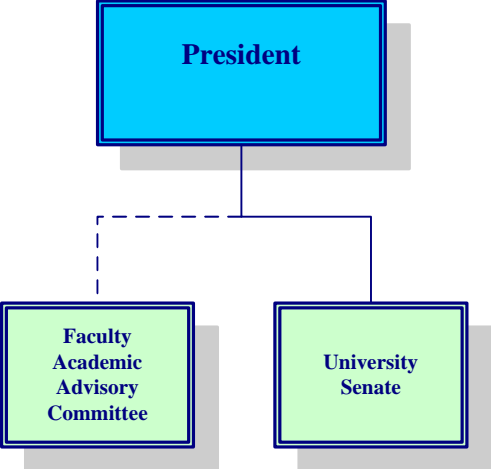
Table of Contents

• President	3
Office of the President	4
• Senior Vice President for Academic Affairs and Provost	5
Office of the Senior Vice President for Academic Affairs and Provost	6
• Office of the Senior Vice President for Health Affairs – Academic Organization	7
Office of the Senior Vice President for Health Affairs – Administrative Organization	8
• Office of the Senior Vice President for Agriculture and Natural Resources	9
• Office of the Senior Vice President for Administration	10
• Office of the Vice President for Business Affairs	11
• Office of the Vice President for Research	12
• Office of the Vice President for Student Affairs	13
• Office of the Vice President for Development and Alumni Affairs	14
• Office of the Vice President for University Relations	15
• Office of the Vice President for Human Resource Services	16

President

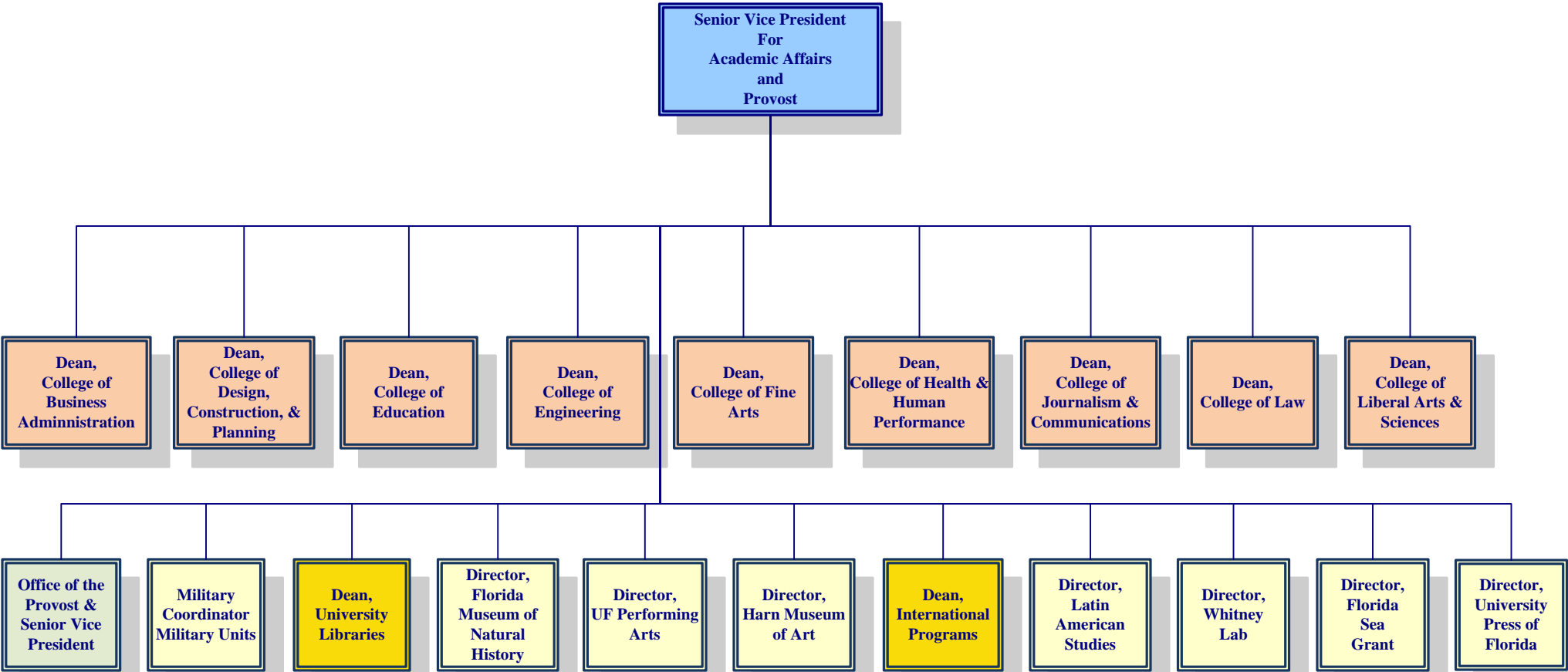


University of Florida Organization Chart

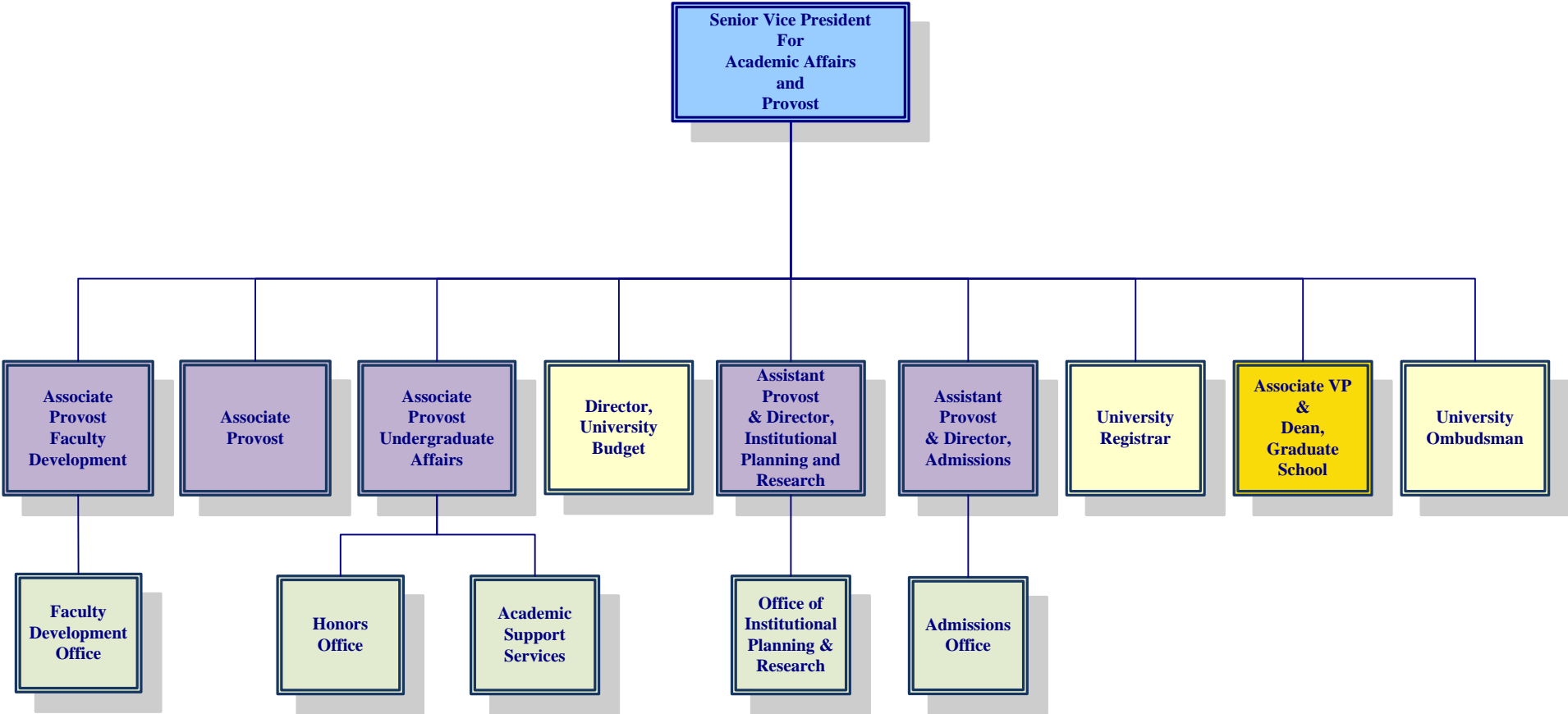


NOTE:---Dotted line indicates that this committee reports to both the President and Senior Vice President for Academic Affairs and Provost

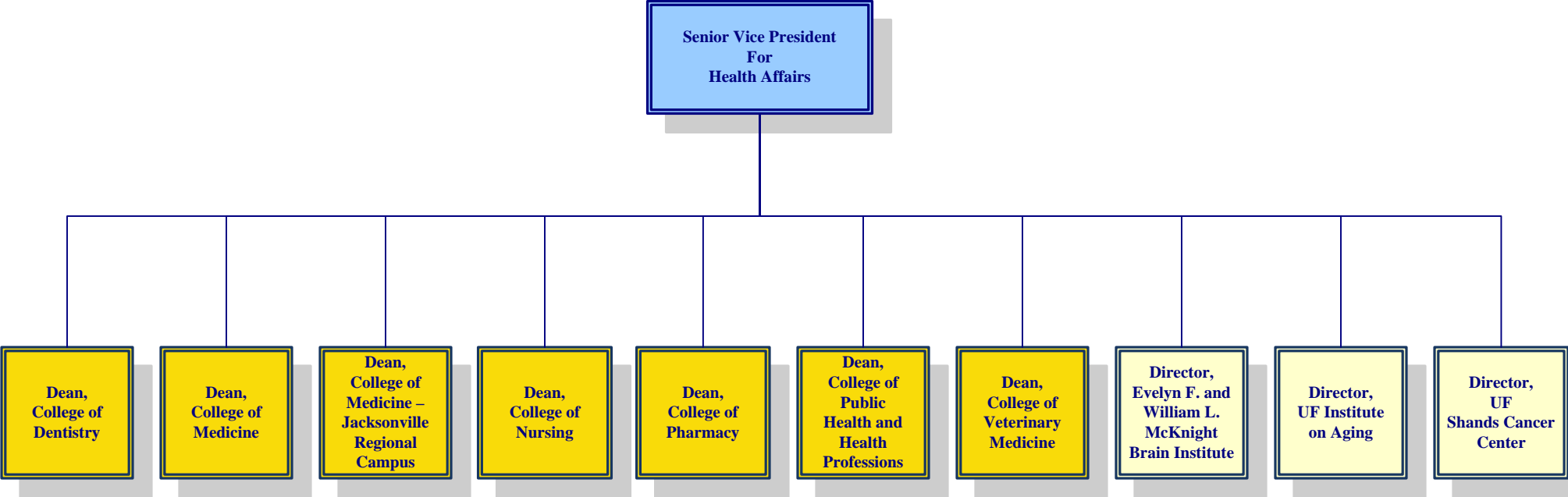
Senior Vice President for Academic Affairs and Provost



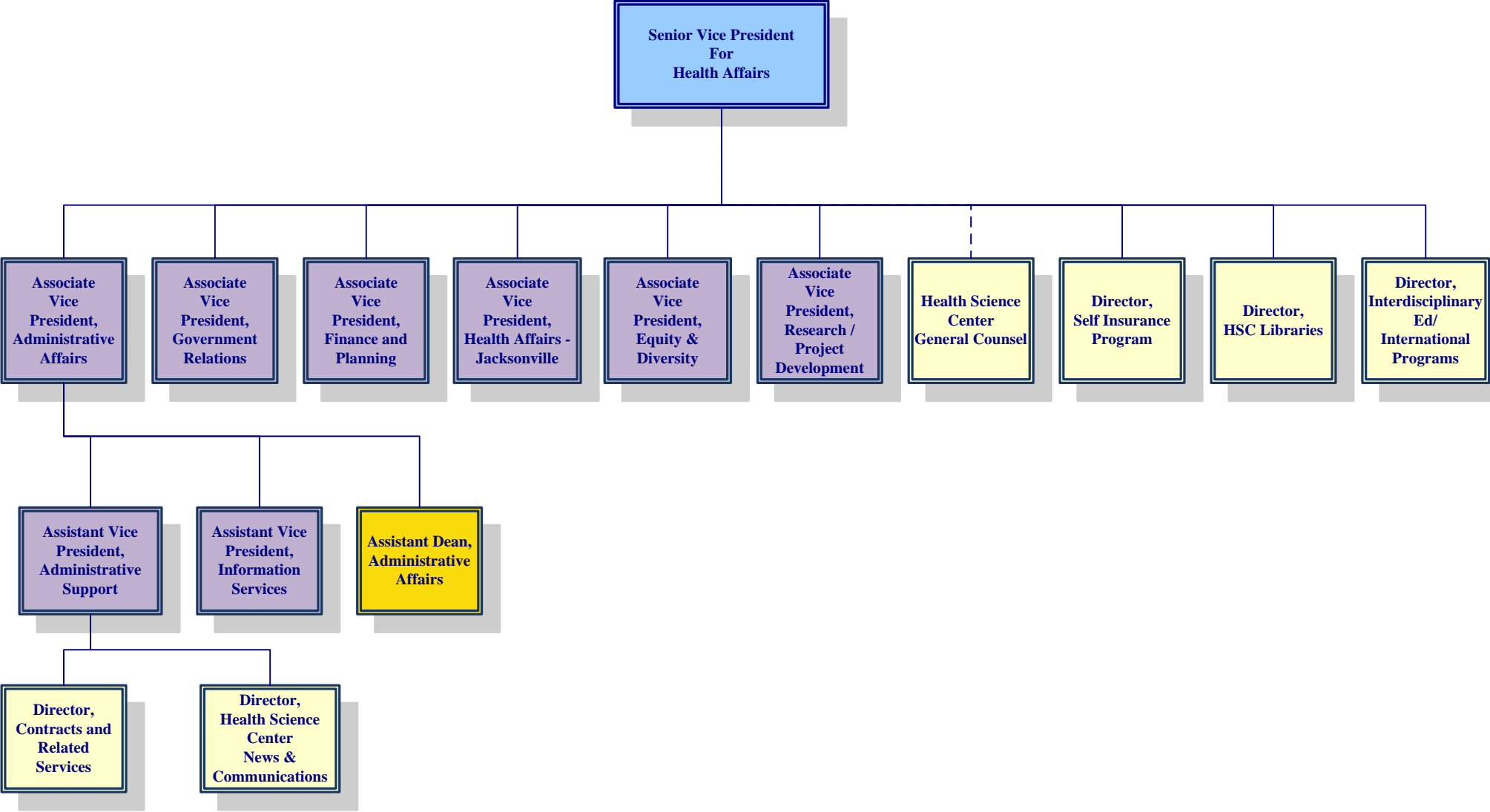
Office of Senior Vice President for Academic Affairs and Provost



**Office of the Senior Vice President for Health Affairs
Academic Organization**

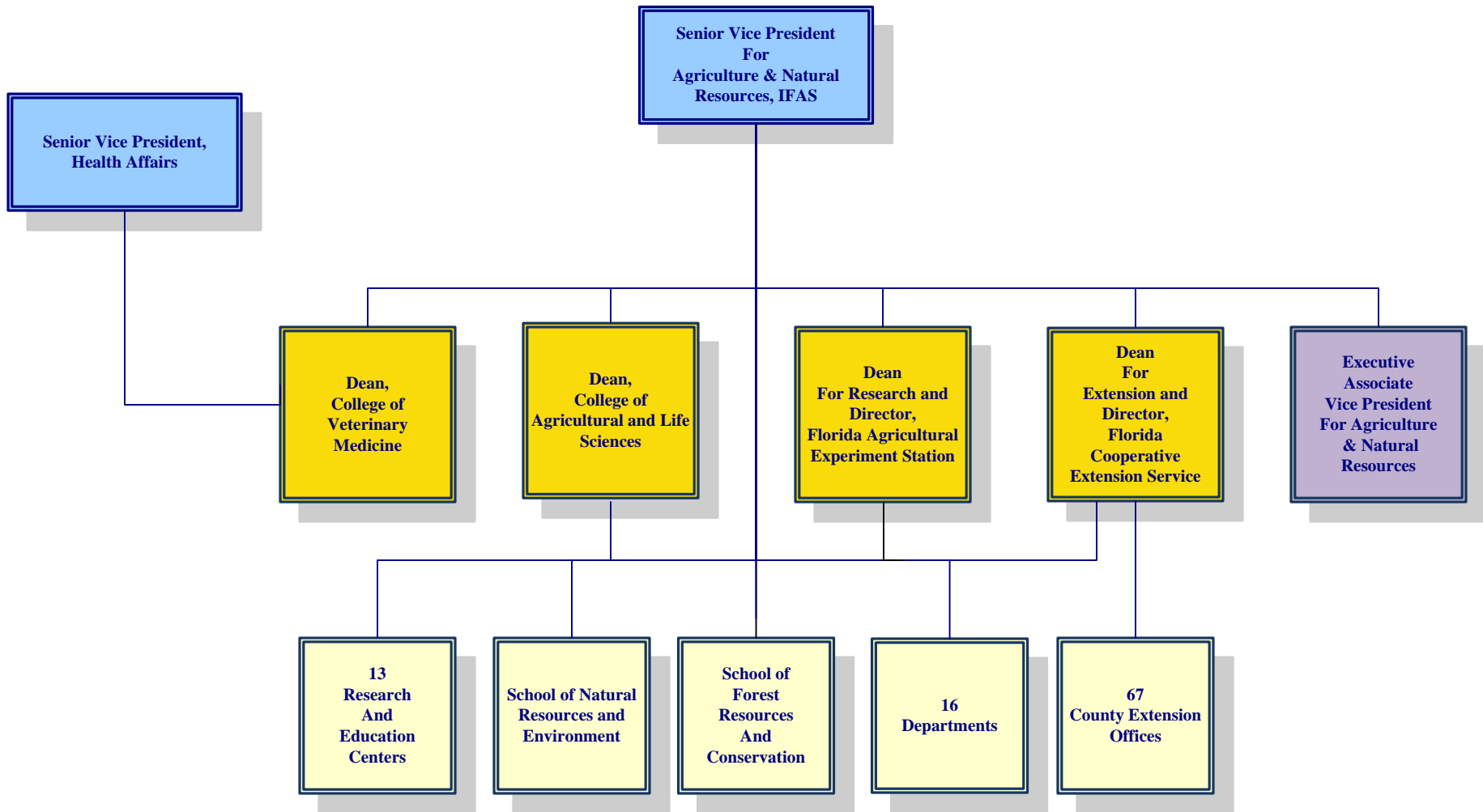


Office of the Senior Vice President for Health Affairs
Administrative Organization

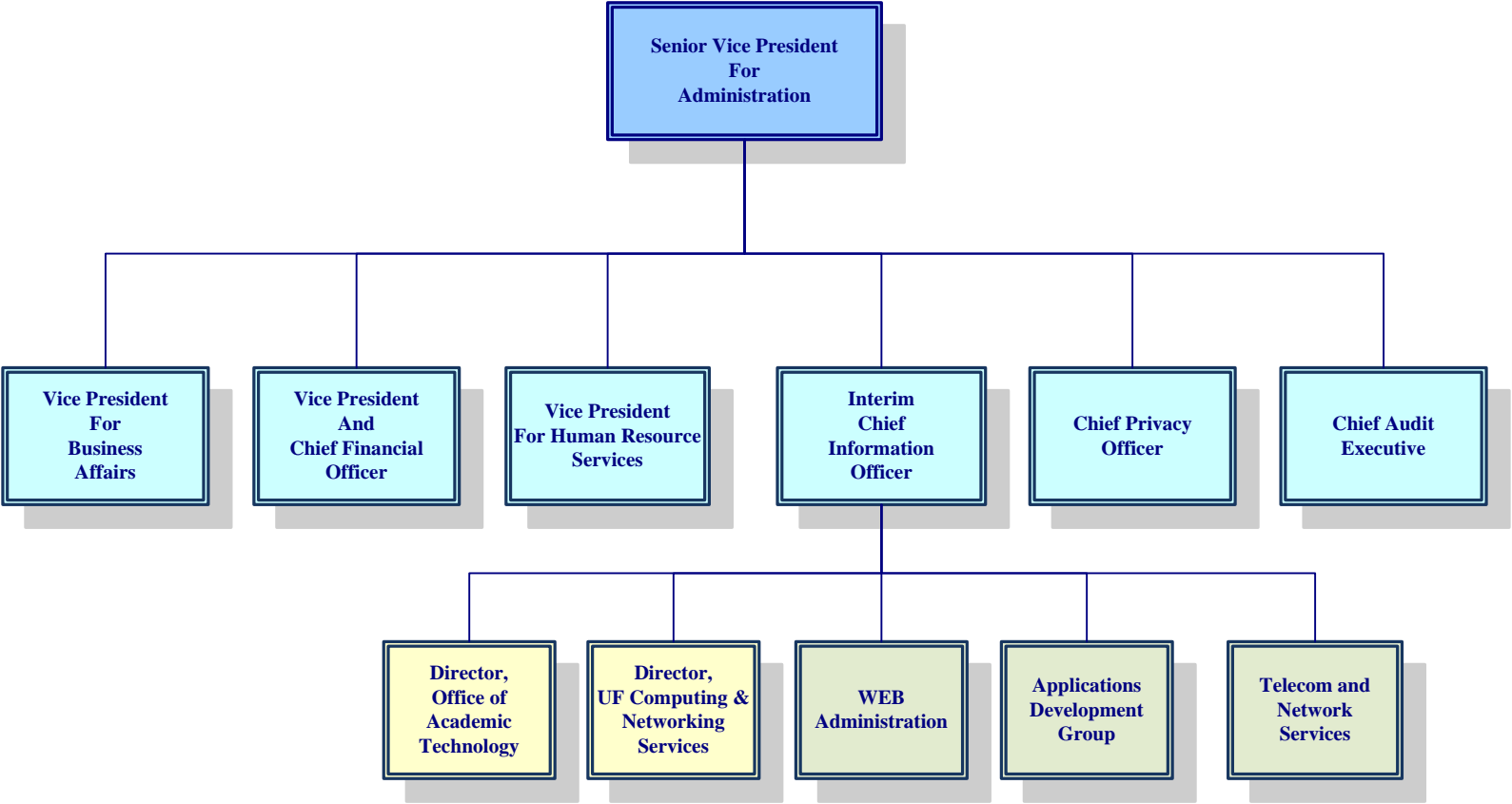


Note: Dashed lines indicate indirect reporting

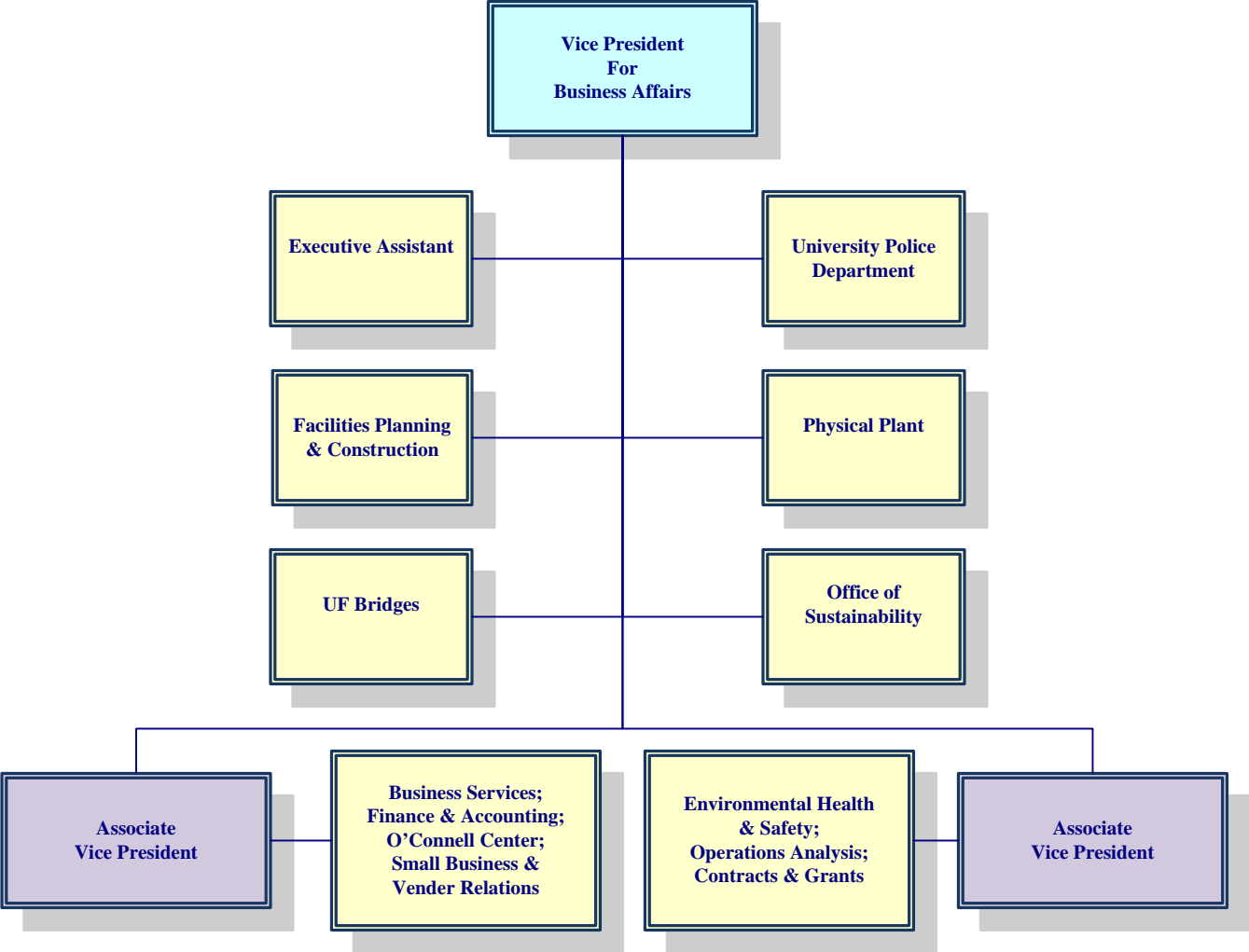
Office of the Senior Vice President for Agriculture and Natural Resources, IFAS



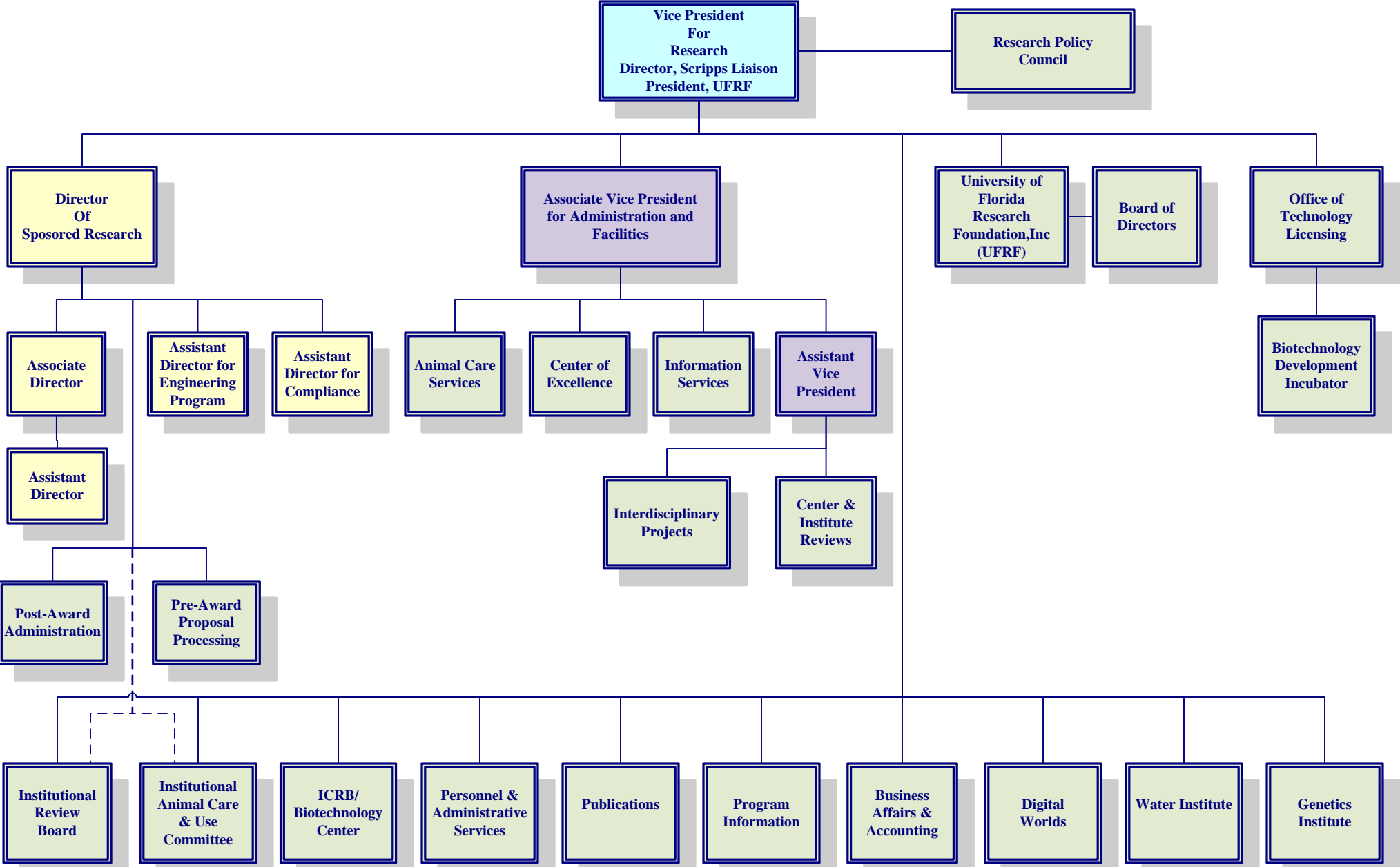
Office of the Senior Vice President for Administration



Office of the Vice President for Business Affairs

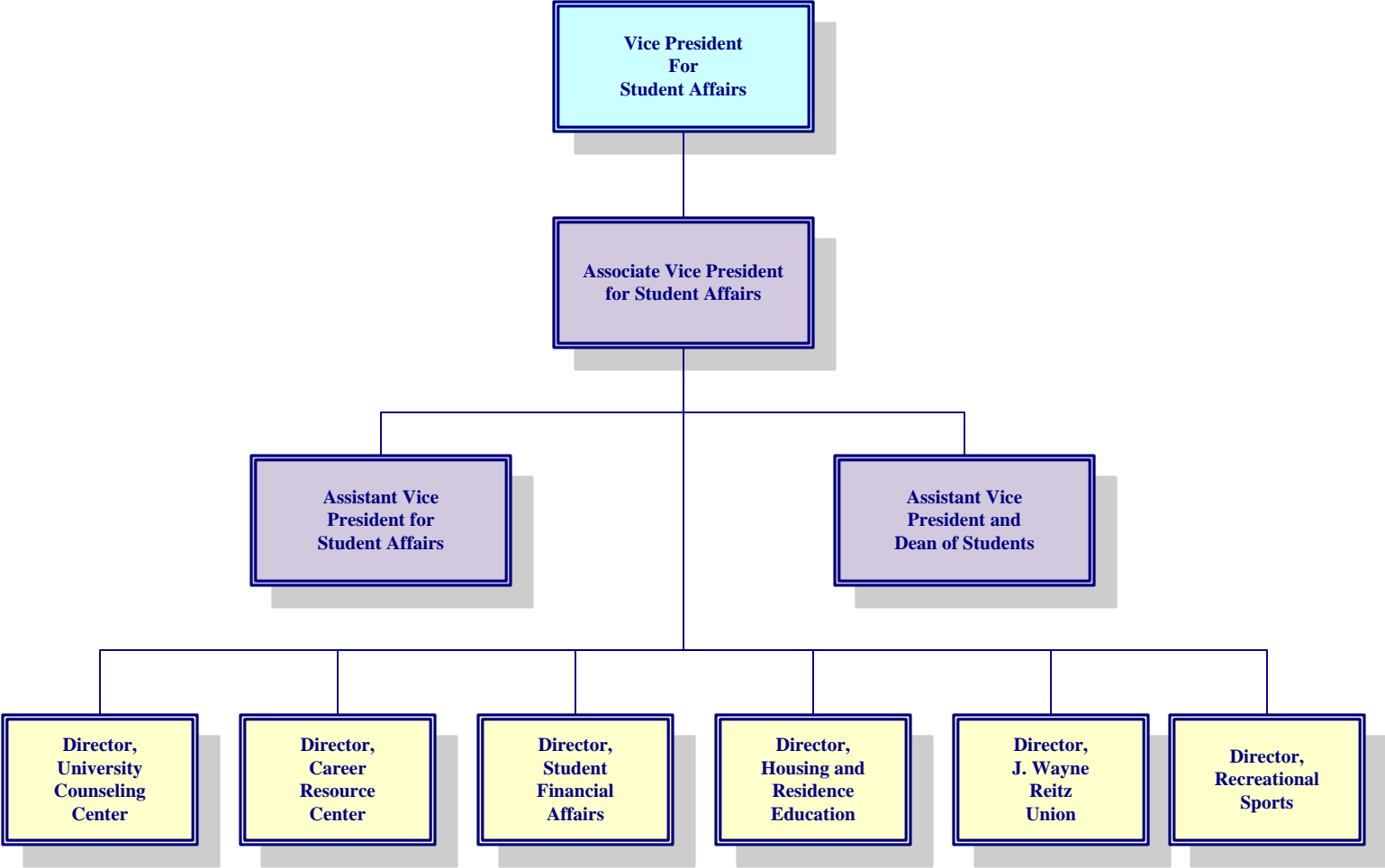


Office of the Vice President for Research

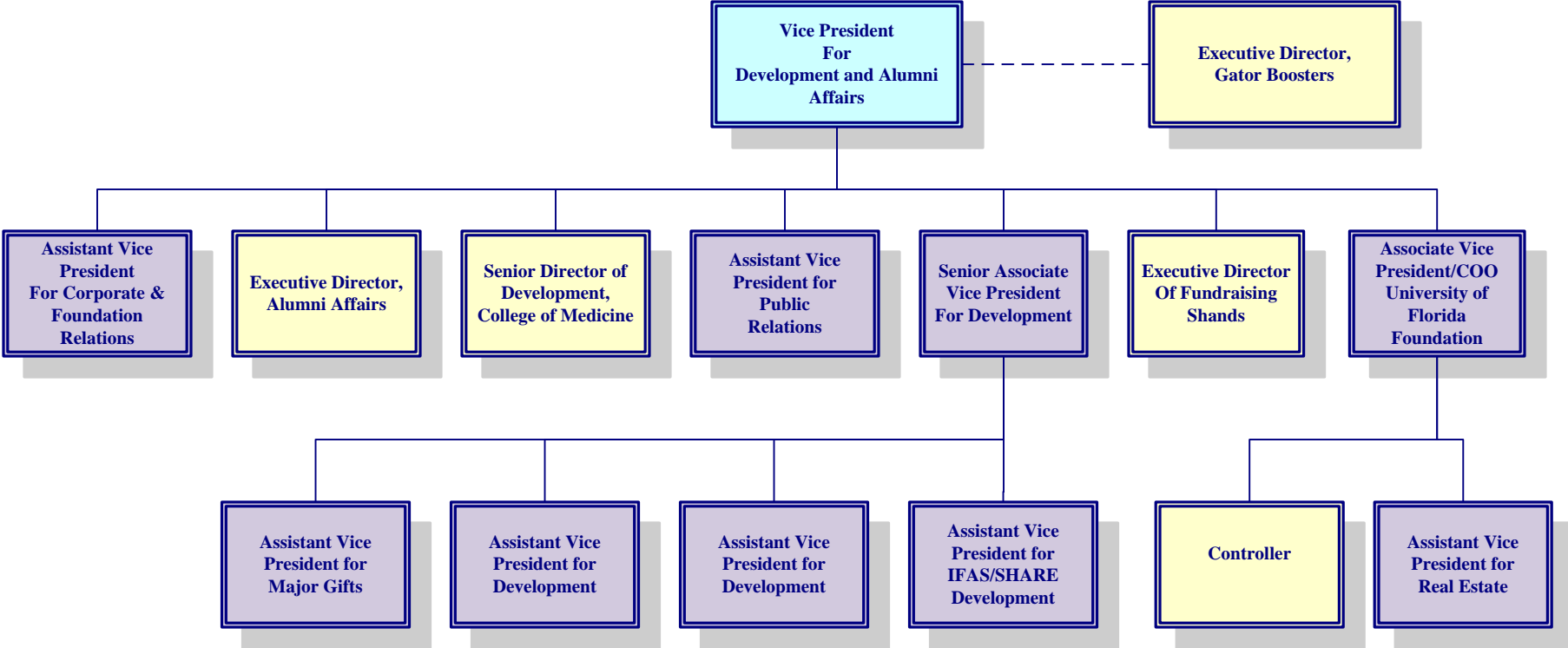


Note: Dashed lines indicate indirect reporting

Office of the Vice President for Student Affairs

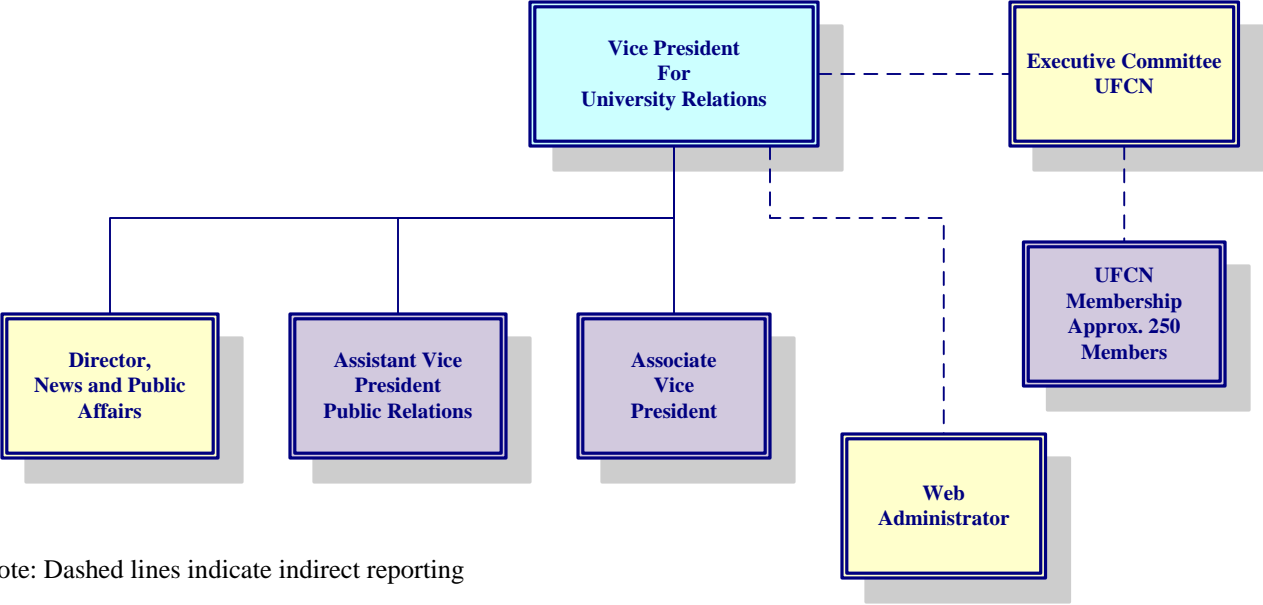


Office of the Vice President for Development and Alumni Affairs



Note: Dashed lines indicate indirect reporting

Office of the Vice President for University Relations



Note: Dashed lines indicate indirect reporting

University of Florida Organization Chart

Office of the Vice President for Human Resource Services

